

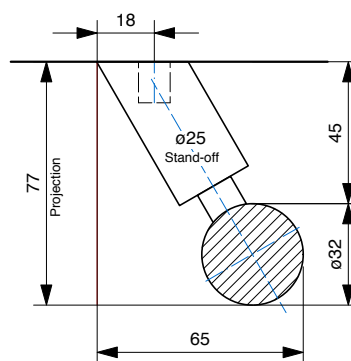
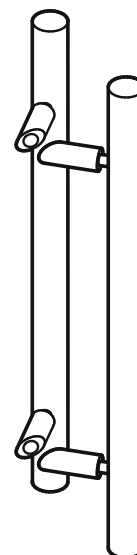


DDA Compliant - 316 Marine Grade Stainless Steel

CODE	SECTION	PROJECTION	LENGTH	CTC
BAH-147/A	Dia 25 32 38	70 77 83	400	200
BAH-147/B	Dia 25 32 38	70 77 83	500	300
BAH-147/C	Dia 25 32 38	70 77 83	600	400
BAH-147/D	Dia 25 32 38	70 77 83	700	500
BAH-147/E	Dia 25 32 38	70 77 83	800	600
BAH-147/F	Dia 25 32 38	70 77 83	900	700
BAH-147/G	Dia 25 32 38	70 77 83	1000	800
BAH-147/H	Dia 25 32 38	70 77 83	1100	900
BAH-147/I	Dia 25 32 38	70 77 83	1200	1000
BAH-147/J	Dia 25 32 38	70 77 83	1300	1100
BAH-147/K	Dia 25 32 38	70 77 83	1400	1200
BAH-147/L	Dia 25 32 38	70 77 83	1500	1300
BAH-147/M	Dia 25 32 38	70 77 83	1600	1400
BAH-147/N	Dia 25 32 38	70 77 83	1700	1500
BAH-147/O	Dia 25 32 38	70 77 83	1800	1600
BAH-147/P	Dia 25 32 38	70 77 83	1900	1700
BAH-147/Q	Dia 25 32 38	70 77 83	2000	1800
BAH-147/R	Dia 25 32 38	70 77 83	2100	1900
BAH-147/S	Dia 25 32 38	70 77 83	2200	2000
BAH-147/T	Dia 25 32 38	70 77 83	2300	2100
BAH-147/U	Dia 25 32 38	70 77 83	2400	2200

- Figures in **bold** indicate handles require intermediate fixing
- Special sizes available upon request

FINISHES	
Standard:	SSS/PSS
Options:	Powdercoat Dulux
Electroplate:	SBN ORB BN CO

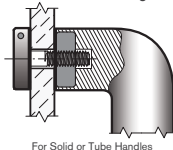


How to specify

	PRODUCT CODE	LENGTH	FINISH	FIXING	DOOR TYPE
Example:	BAH-147/A	400mm	SSS	B	GD

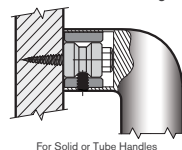
D = DISK FIX

Disk fixed - **Single**



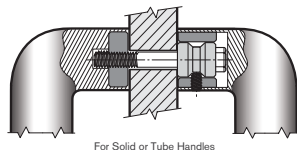
C = CONCEALED FIX

Coach Bolt fixed - **Single**



B = BACK to BACK FIX

Back to Back fixed - **Pair**



PLEASE SPECIFY THE DOOR TYPE
GD: Glass
TM: Timber
AL: Aluminium